

Arena-CADTALK Integration for Autodesk Inventor and Vault

Automate Design Processes for Accuracy

OVERVIEW

Most product companies share a common struggle—managing and releasing design data from engineering teams to the rest of the company. Painful manual processes contribute to team dissatisfaction and disconnected data silos, resulting in a lack of visibility and collaboration and, ultimately, poorer product decisions. Facilitate better collaboration between your teams and get better products faster with an automated integration between Arena PLM and Autodesk® Inventor/Vault. The CADTALK Integration for Autodesk Inventor/Vault provides a seamless, accurate bidirectional flow of information between Inventor/Vault and Arena for prototype, new product introduction (NPI), and ongoing product development processes.

CONNECT THE MECHANICAL DESIGN PROCESS TO THE FULL PRODUCT RECORD

Collaborating with today's dispersed design teams introduces risk when moving from team-level engineering design to the larger released product record and manufacturing. Design teams utilize Inventor/Vault work-in-progress (WIP) tools to ensure engineers do not step on each other's toes during early design. Once the individual designs are mature enough, they need to be incorporated into the full product design with other mechanical, electrical, software, and documentation components. With CADTALK Integration for Inventor/Vault, teams have an automated and easy process that reduces errors and accelerates the NPI process.

HOW IT WORKS

The CADTALK Integration for Autodesk Inventor and Vault provides design teams with the ability to create and publish parts, BOMs, and files from within Inventor or from Vault to Arena. Inventor/Vault users publish the engineering BOM and configurable file types such as PDF, STEP, or CAD data to Arena. All integration activities can be accessed on demand through the Inventor files both with and without Vault or directly from Vault with a headless automated service.

BENEFITS

✓ Faster Innovation

- Ensure operations team feedback early in the design process, in support of design for manufacturing (DFM) framework
- Provide the information necessary for accurate and responsive sourcing

✓ Process Simplification and Standardization

- Reduce onboarding and training time by removing the need to learn how to duplicate same or similar tasks in multiple systems
- Support business needs with configuration options for publishing part data based on design scenarios
- Maintain a consistent and controlled complete product record for the entire organization and supply chain

✓ Reduced Product Delays and Costs

- Eliminate the risks of data entry errors
- Ensure everyone is working from the same, most current product record and associated files

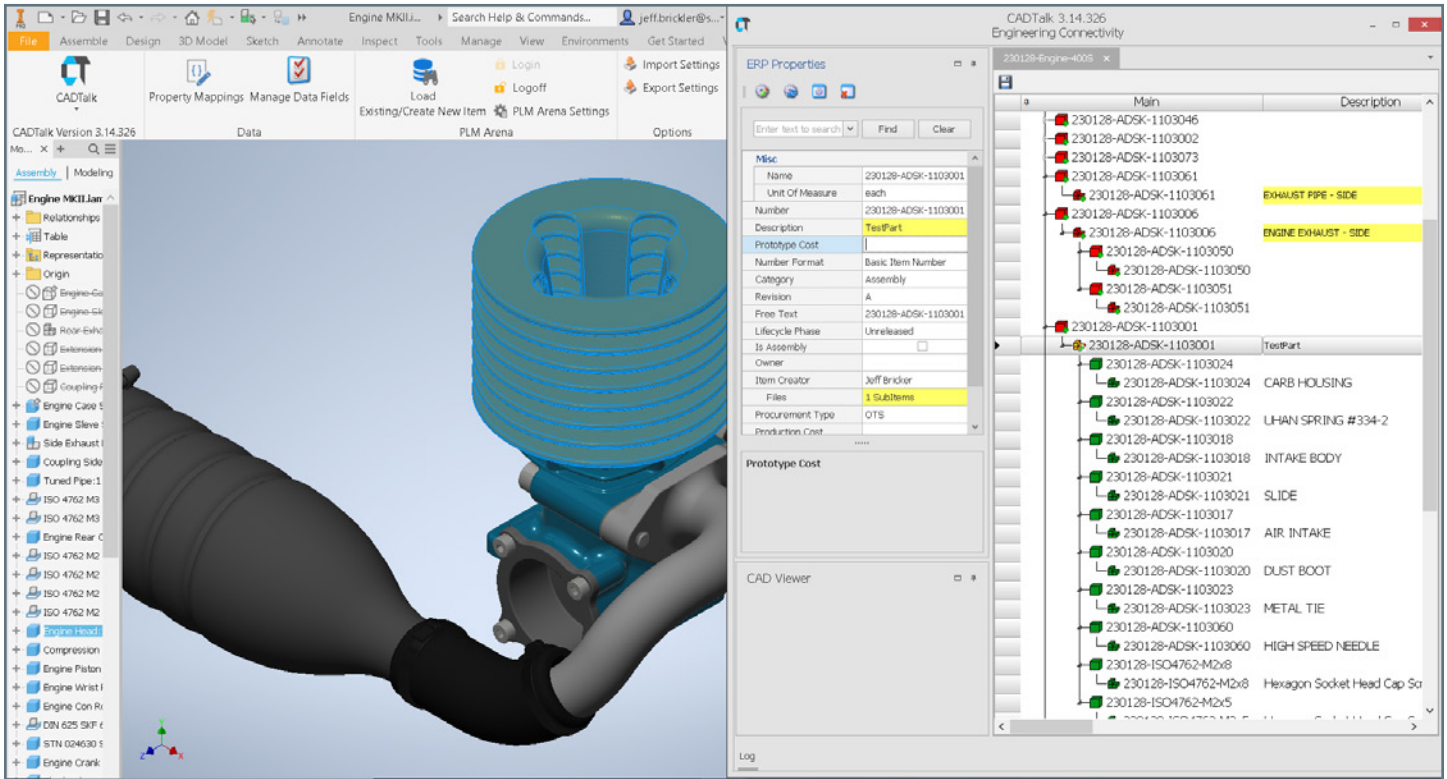
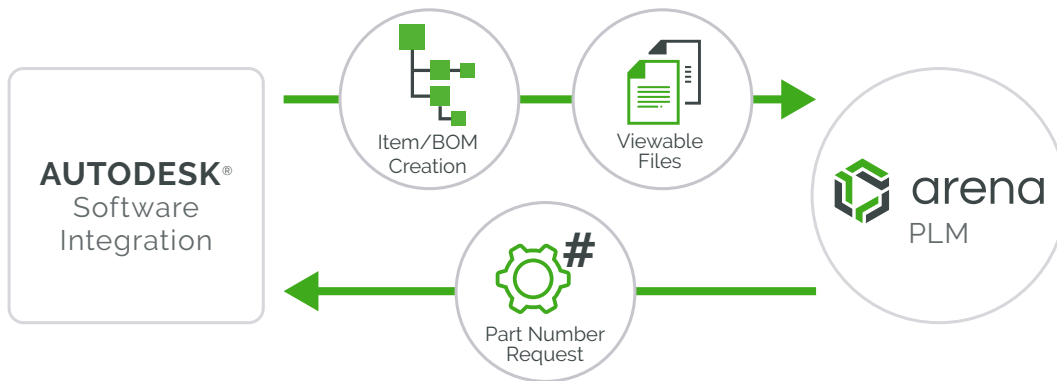
THE CADTALK CAD – PLM SOLUTION

Have multiple CAD tools across your engineering teams? You can use CADTALK platform to integrate them to Arena. CADTALK is a middleware automation layer that facilitates data flows between multiple CAD systems and Arena.

Systems currently supported include Autodesk® AutoCAD, AutoCAD Electric, Fusion 360, Inventor/Vault, and Revit; PTC Creo; SOLIDWORKS®, Solid Edge®, EPLAN; Microsoft® Excel, and Tekla®.

Cadtalk Minimum Technical Requirements

- Windows 10 or higher
- Processor 1.5 GHz or higher
- 8 GB of RAM
- Disk space (minimum) 500 MB
- NET Framework 4.6.xx or higher
- Autodesk Inventor Read-Only mode required if user does not have Autodesk Inventor installed.
- CAD software is not required to use CADTALK unless user wants to install inside the CAD host.



DETAILED FUNCTIONALITY MATRIX BY MCAD AND CADTALK FUNCTIONAL PACKAGE

Supported functionality depends on the MCAD system and the purchased CADTALK functional package (Launch, Scale, Enterprise). The functionality each customer needs will be determined by engineering practices and design to release processes. [Please consult this matrix when considering which CADTALK package best meets your needs.](#)

Publish Options

- Publish direction from CAD files on demand (Launch package)
- Publish directly from PDM / Vault on demand (Scale package)
- Fully automated workflow for volume publishing (Enterprise package)
- On-demand publishing directly from Inventor or stand-alone host.
- Open the part in Arena directly from inside Inventor or from the stand-alone host.

Publish Items and BOMs

- Publish a new part and BOMs from Inventor/Vault to Arena
- Support of Standard Vault and Item master.
- Create and populate Arena engineering change orders (Scale package)

Publish Files

- Publish derived files (MS Office, PDF, STEP, other configurable file types) from Inventor/Vault to Arena, associating these file(s) to related parts in Arena
- Upload CAD thumbnails

ANNUAL SUBSCRIPTION, USERS, AND RECOMMENDED ACTIVE SESSIONS

CADTALK CAD <> PLM is an annual subscription software based on the number of active session licenses needed. CADTALK active sessions indicate the number of manual and scheduled sessions being run simultaneously for data actions between systems.

CADTALK CAD - Arena is available in three packages - Launch, Scale, and Enterprise.

Number of recommended active sessions is based on the size of mechanical engineering team.

FAST IMPLEMENTATION

Fixed-price services include implementation, configuration, training, and documentation to get your Arena platform connected to your MCAD systems so you can immediately benefit from efficient, accurate agile development processes.

GETTING STARTED

It doesn't matter where you are in your journey with Arena and Inventor/Vault—you can implement the integration at any time. It is easy to install and configure to support your existing processes. CADTALK, an Arena and Autodesk partner, provides integration, installation, and configuration assistance, and customization services as needed along with on-going product upgrade support for future Inventor/Vault versions. Contact Arena or CADTALK today to learn more.

CADTALK LAUNCH AND SCALE ACTIVE SESSIONS

Number of CAD Users/Seats	Recommended Active Sessions
1-5	2
6-10	3
11-15	5
16-20	7
21-25	8
26-30	10
31+ CAD Users- Enterprise active sessions available.	

CADTALK Enterprise package with automated publishing requires 1 active session for every 3 CAD Users

**Number of CAD Users: Recommended Active Sessions ratio is 3 : 1. Table is for estimation only.*

ABOUT ARENA

Arena, a PTC Business, helps companies create innovative products that change the world. Arena unifies product lifecycle management (PLM) and quality management system (QMS) processes, allowing every participant throughout product development and commercialization to work together fast and effectively. With Arena, dispersed teams accelerate the design and delivery of quality products. For more information, visit [Arena, a PTC Business](#).

ABOUT CADTALK

CADTALK has provided world-class CAD to ERP and PLM integration and implementation since 2005, with customers throughout the world. With a deep understanding of ERP, PDM, PLM, and CAD software and the challenges facing manufacturing companies, CADTALK provides deep and robust integrations that can be configured for each customer's needs. CADTALK has partnerships with all the major CAD/PDM/PLM vendors. For more information, visit [CADTALK.com](#)